

IPS: INTELLIGENT POWER SERVO

AC SERVO NUTRUNNER



 **Genesis** [®] LLC
FASTENING SYSTEMS

Integration/Sales/Support of
CORETEC
Servo Nutrunners & Presses

THE GENESIS DIFFERENCE



To compete in today's world, manufacturers must work smart. Maximum efficiency, maximum quality and minimal downtime are not luxuries. They are necessities. But where's the answer to your unique situation?

Right here, at Genesis Fastening Systems, LLC.

Genesis Fastening Systems, LLC, a wholly owned subsidiary of Genesis Systems Group, LLC, offers you the best in fastening products and services utilizing Coretec Inc. Intelligent Power Servo (IPS) products.

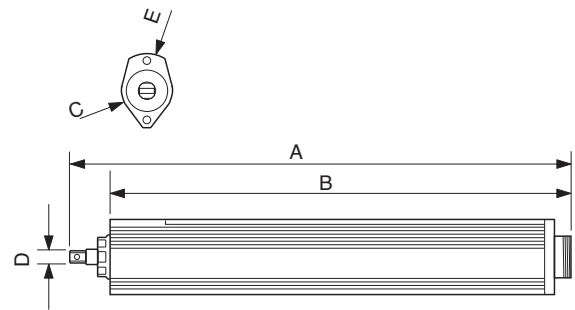
Genesis Systems Group, LLC a premiere workcell integrator, has provided manufacturers automated production solutions since 1983. Our focus on you, the customer, has been the key to our success providing quality products and outstanding service 24-hours a day.

LOW TORQUE SERIES

2300S Series

TORQUE RANGE: UP TO 65 (Nm)*

- Straight type with angle and offset options
- The 2300S series is extremely versatile and suitable for fixed handheld, multiple spindle applications, and other difficult fastening processes



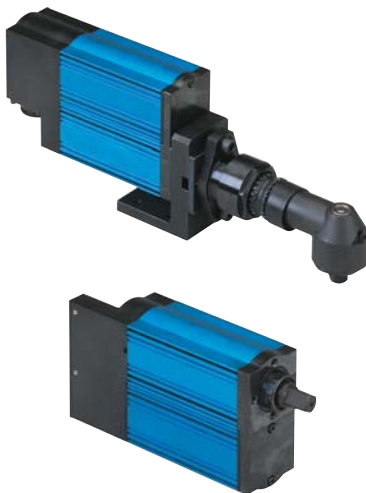
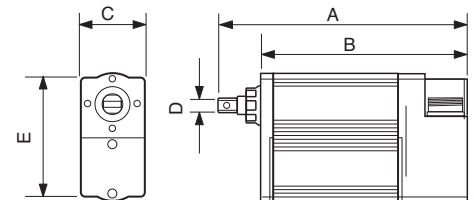
MODEL	Torque Range (Nm)		Max Speed (rpm)	A (mm)	B (mm)	øC (mm)	D (mm)	øE (mm)	Weight (kg)
	Low	High							
2301S	2	6	1080	366	338	38	9.5	54	1.8
2302S	5	23	540	366	338	38	9.5	54	1.9
2304S	15	40	250	366	338	38	9.5	54	1.9

* See Genesis for angle and offset option specifications.

2400Q Series

TORQUE RANGE: FROM 20 (Nm) - 90 (Nm)*

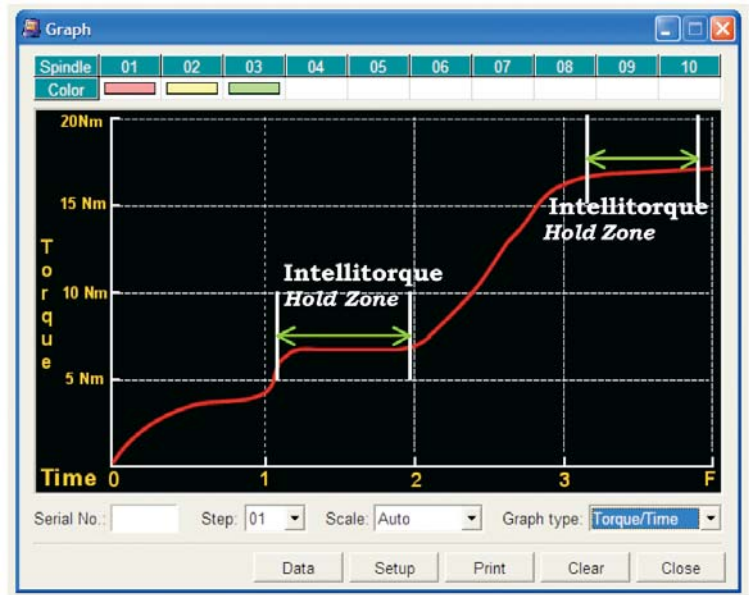
- Cube type with angle and offset options
- Compact cube configuration allows for applications with constrained space limitations



MODEL	Torque Range (Nm)		Max Speed (rpm)	A (mm)	B (mm)	C (mm)	D (mm)	E (mm)	Weight (kg)
	Low	High							
2402Q	5	19	410	215	179	54	12.7	109	3.3
2405Q	15	40	190	215	179	54	12.7	109	3.3

* See Genesis for angle and offset option specifications.

Trouble achieving and maintaining proper torque on difficult soft or gasketed joints? Our Intellitorque process is the solution.



INTELLitorque

Intellitorque is a unique fastening process that provides greater control with increased accuracy utilizing a torque vs. time holding function at any step of the fastening process. This process eliminates bushing and gasket rebound which affects tightening accuracy.

IPS Computer Program Interface

- Windows® Based Software Interface
- Allows the user to view, monitor, and change the fastening parameter data real time when linked to the IPS Fastening System.
- Allows the user to identify the fastening tool through its unique tool ID system.

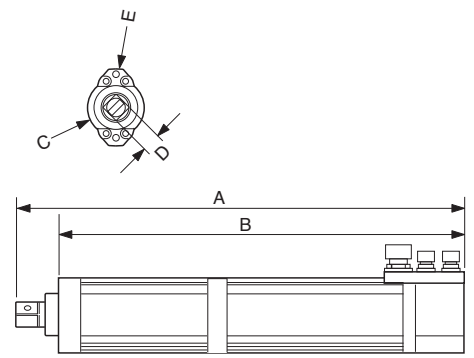


MID TORQUE SERIES

2500S Series

TORQUE RANGE: FROM 55 (Nm) TO 350 (Nm)*

- Straight type with angle and offset options
- The 2500s series is extremely versatile and suitable for fixed handheld, multiple spindle applications, and other difficult fastening processes



MODEL	Torque Range (Nm)		Max Speed (rpm)	A (mm)	B (mm)	øC (mm)	D (mm)	øE (mm)	Weight (kg)
	Low	High							
2505S	20	60	610	434	398	56	12.7	76	5.5
2509S	40	100	285	434	398	56	12.7	76	5.5
2510S	40	75	490	522	479	56	19.05	76	6.7
2515S	40	130	285	464	421	56	19.05	76	5.5
2520S	80	160	230	522	479	56	19.05	76	6.7

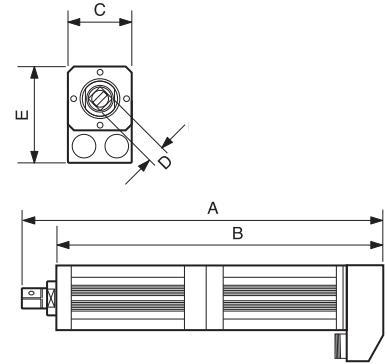
* See Genesis for angle and offset option specifications.



2600S Series

TORQUE RANGE: FROM 200 (Nm) TO 500 (Nm)*

- Straight type with angle and offset options
- A maximum torque of 500 (Nm) is available with special offset gears
- Special high-torque angle head with a torque capability of 460 (Nm) is available



MODEL	Torque Range (Nm)		Max Speed (rpm)	A (mm)	B (mm)	C (mm)	D (mm)	E (mm)	Weight (kg)
	Low	High							
2620S	100	190	240	440	397	79	19.05	124	9.0
2630S	100	270	107	440	397	79	19.05	124	9.0

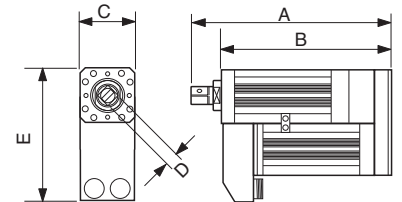
* See Genesis for angle and offset option specifications.



2600Q Series

TORQUE RANGE: FROM 100 (Nm) TO 500 (Nm)*

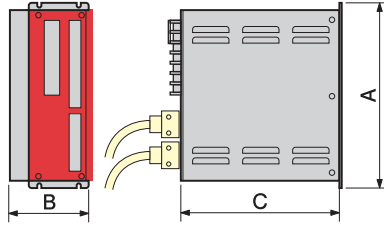
- Cube type with angle options
- Compact cube configuration allows for applications with constrained space limitations
- A maximum torque of 500 (Nm) is available with special offset gears



MODEL	Torque Range (Nm)		Max Speed (rpm)	A (mm)	B (mm)	C (mm)	D (mm)	E (mm)	Weight (kg)
	Low	High							
2610Q	50	97	480	288	245	79	19.05	199	9.5
2620Q	100	190	240	288	245	79	19.05	199	9.5
2630Q	100	270	170	288	245	79	19.05	199	9.5

* See Genesis for angle and offset option specifications.

IPS CONTROLLER



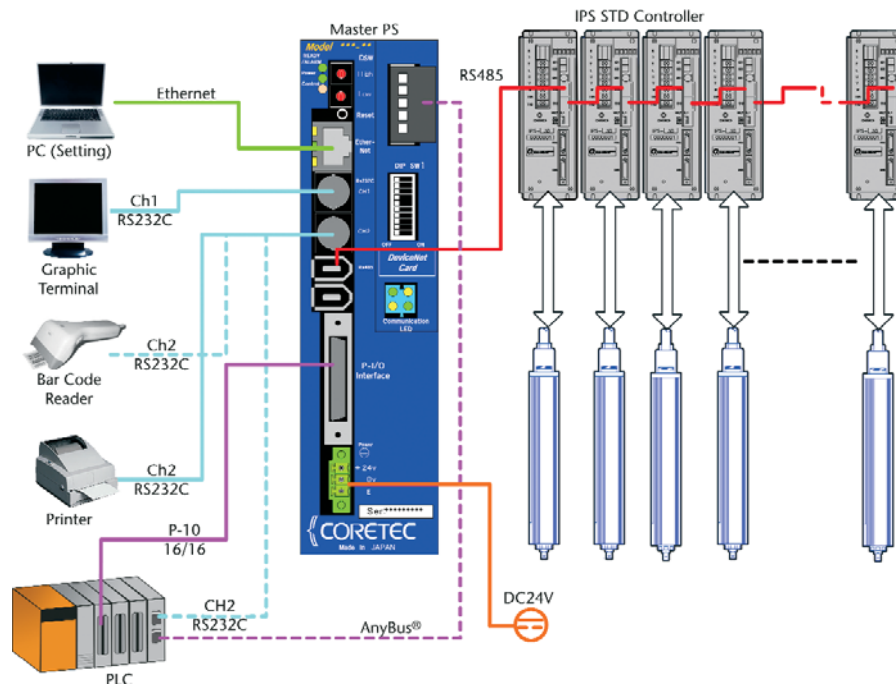
MODEL NO.	A (mm)	B (mm)	C (mm)
IPS30CE-R	255	85	224
IPS50CE-R	255	110	224
IPS100CE-R	255	110	224
IPS110CE-R	255	115	243

- The IPS controller can operate as a stand-alone unit or be configured into a multiple spindle-fastening configuration.
- Each servo controller is linked via a high speed RS-485 communication connection.
- The IPS controller is equipped with a high speed data processor which allows for early

detection of damaged components and prevents additional degradation.

- Each servo controller has real-time feed back and control ensuring the highest fastening quality standard.

SYSTEM CONFIGURATION (multi-servo)



- The Master Module uses multiple servo control with up to a maximum of 31.
- The Master Module allows information to be transferred and received by PC and/or PLC through RS232c, and Ethernet communications.
- In addition to standard Discrete I/O, the Master Module can accommodate standard fieldbus interfaces such as: DeviceNet, Profibus, Allen-Bradley Remote I/O, Mitsubishi CC Link, and Interbus-S.

Genesis
 LLC
FASTENING SYSTEMS

Integration/Sales/Support of
CORETEC
 Servo Nutrunners & Presses

8900 Harrison Street, Davenport, IA 52806 | **586-445-5600** | Fax 563-445-5699
 1972 Star Batt Drive, Rochester Hills, MI 48309 | 248-852-2435 | Fax 248-852-2483
 24-Hour Emergency Hotline | 563-445-5777 | www.genesis-systems.com