

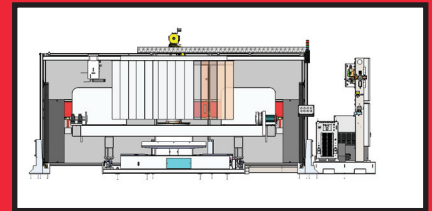
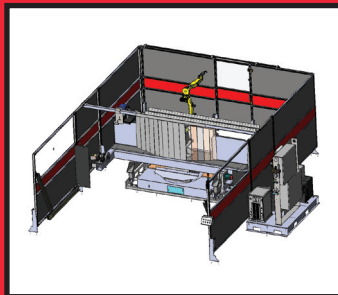
Genesis® **VERSA RC3L XM**



KEY FEATURES

- **Productivity**
 - Fast index time reduces overall weld cycle time
 - Multiple robot configurations
 - Design allows automated unload of parts from weld station
- **Functionality**
 - Quick installation – robot and positioner on unitized base
 - High utilization of robot work envelope with center robot design
 - Safer robot programming with center mounted robot
 - Center robot design reduces required floor space
 - Cost efficient pneumatic main sweep design
- **Reliability**
 - Pre-engineered, proven design
 - Single source responsibility
 - 24-hour support service
- **Flexibility**
 - High weight capacity
 - Able to accommodate large tool lengths, swing diameters and high weight capacity
 - Easily configured to meet application requirements

The Versa RC3L XM center mount robot modular design maximizes the utilization of the robot work envelope placing the robot in the center of the three-axis turntable and closer to the workpiece.



Base Positioner Configuration

Main axis - pneumatically driven

Main sweep index time 4.5 to 6.0 seconds

Minor axis – dual servo driven trunnions

Tool length 2.0-meters (78-inches)

Tool swing diameter 1.25-meters (49-inches)

Weight capacity 1,000-kilograms (2,204-lbs)

Base Component Configuration

FANUC ArcMate 100iC or Panasonic TA-1400 G3

Lincoln i400 or Miller Auto Axxess 300

Tregaskiss, Binzel or TBi air-cooled through arm torch

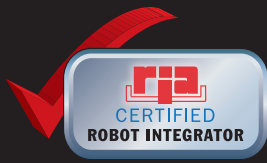
Genesis torch alignment package

Safety package (includes light curtains, gate interlock and barriers)

Genesis Allen-Bradley controls package with L1 processor

Rotary ground

INNOVATION AND EXPERIENCE FROM YOUR SINGLE SOURCE



VERSA RC3L XM

Standard Dimensional Specifications

- Tool length **TL**
2.0-meters (78-inches) to 3.0-meters (118-inches)
- Tool swing diameter **SD**
1.25-meters (49-inches) to 1.5-meters (59-inches)
- Load height **LH**
1.0-meter (39-inches)
- Cell width **CW**
6620-mm (260-inches) to 7430-mm (292-inches)
- Cell depth **CD**
6520-mm (256-inches) to 7330-mm (288-inches)
- Cell height **CH**
102-inches (2600-mm)

Standard Capacity Specifications

- Weight capacity
1,000-kilograms (2,204-lbs)
- Engineering specifications for 1,000-kilograms capacity per station
 - Gearbox rated torque 4705Nm
 - Gearbox ratio 253:1
 - Gearbox maximum moment 20,580Nm
 - Motor maximum RPM 4,000
 - Motor torque output 18Nm
 - Nominal acceleration .5 seconds
 - 180-degree index time 5.0 seconds

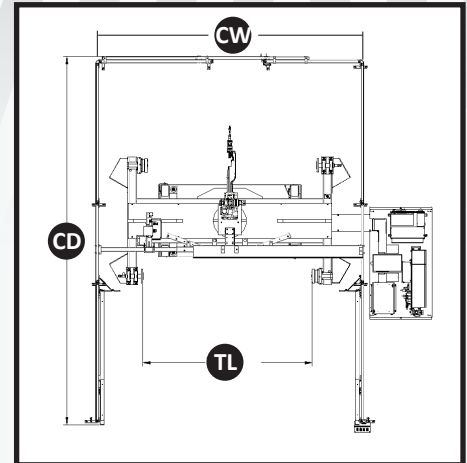
Standard Platform Options

- Tool length 2.5-meters, 3.0-meters
- Tool swing diameter 1.5-meters
- Exposed power track cable carrier system
- Smoke hood and extraction system
- Off-line programming
- LaunchIT or standard installation
- Training programs (basic, advanced, maintenance, off-line, CRAW)
- Intelligence Center™

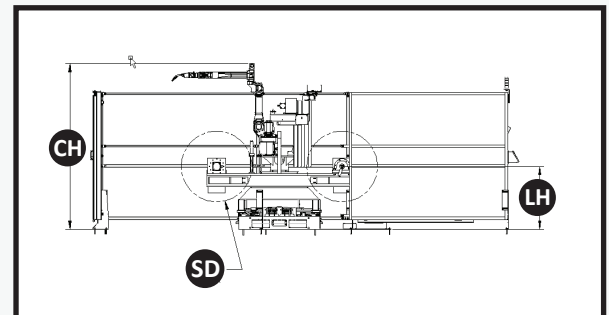
Standard Component Options

- Robot models: FANUC, Panasonic, Motoman
- Process gear: Miller, Lincoln, Fronius, Thermadyne, Hypertherm
- Welding torches: Tregaskiss, Binzel, TBI, Fronius
- Torch cleaners: Tregaskiss, Binzel, TBI
- Controls: PanelView 1000+ Compac

TOP VIEW



SIDE VIEW



Real time status, alarms, historical trends, critical parameters and automatic backup of your workcell anywhere, anytime.