

# VERSA RC3L

## Pre-Engineered Robotic Welding Solutions

For Welding Medium-Sized, High-Volume Production Parts  
Requiring Repositioning in a Compact Space

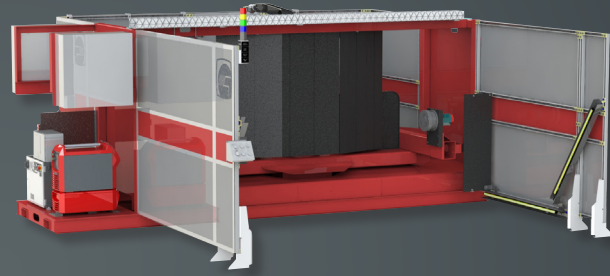
**Versa RC3L Weight Capacity: 1,200-lbs (per station)**

### Modular Design With Maximum Capabilities

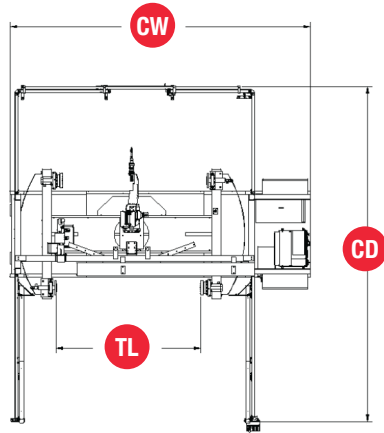
The Genesis Versa RC3L and Versa RC3L XM robotic welding work cell solutions feature a center-mounted, three-axis pneumatic turntable system that is easily configured to meet application requirements for repositioning medium-sized, heavy high-volume production parts in a compact space on a common base.

- ✓ Center-mount robot design with pneumatic H-frame turntable
- ✓ High utilization of robot work envelope in a compact space
- ✓ Cost-efficient pneumatic main sweep design
- ✓ Configurable to meet application requirements
- ✓ Fast index time reduces overall weld cycle
- ✓ Common base for robot / positioner / control pallet

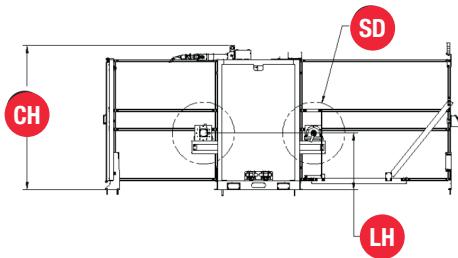
# VERSA RC3L



## TOP VIEW



## SIDE VIEW



## Standard Dimensional Specifications

- TL Tool Length:** 60-inches (1524-mm)
- SD Tool Swing Diameter:** 40-inches (1016-mm)
- LH Load Height:** 36-inches (914-mm)
- CW Cell Width:** 250-inches (6350-mm)
- CD Cell Depth:** 245-inches (6223-mm)
- CH Cell Height:** 93-inches (2362-mm)

## Standard Component Options

- Robot models:** FANUC, Panasonic, Yaskawa Motoman, ABB
- Process gear:** Miller, Lincoln, Fronius
- Welding torches:** TBi, Tregaskiss, Abicor Binzel, Fronius
- Torch cleaners:** TBi, Tregaskiss, Abicor Binzel
- Controls:** Allen-Bradley

## Platform Specifications

	BASE	OPTIONAL
<b>Main axis</b>	pneumatically driven	
<b>Main sweep index time</b>	4.5 to 6.0 seconds	
<b>Minor axis</b>	dual servo driven trunnions	
<b>Tool length</b>	60-inches (1.5-meters)	72-inches (1.8-meters) 84-inches (2.1-meters) 96-inches (2.4-meters)
<b>Tool swing diameter</b>	40-inches (1.0-meters)	48-inches (1.2-meters)
<b>Weight capacity</b>	1,200-lbs (544-kilograms)	1,000-lbs (453-kilograms) (only on 84-in and 96-in options)